



STAGE 3 EXAM
GEOGRAPHY

DRAFT SAMPLE EXAMINATION
QUESTIONS

AND

SOURCES TO BE USED IN FORMAT OF A
BROADSHEET

Design Brief for the Stage 3 Examination

Section One – Multiple Choice (20 Marks)

Section Two – Short Answer and
Data Interpretation (20 Marks)

Section Three – Sectionalised Extended
Answer (60 Marks)

*(Please note that the draft sample questions in this booklet
relate only to Section Three of the exam)*

SECTION THREE: SECTIONALISED EXTENDED ANSWER [60 Marks]

In this section, there are **FOUR (4)** questions.

Students should attempt **TWO** questions in this section: **ONE** from Part A: Unit 3A - Geography of Planning Cities AND **ONE** from Part B: Unit 3B - Geography of Climate Change.

Part A: Unit 3A - The Geography of Planning Cities

Question 1

Use Sources 1 and 2 to answer part a) of this question.

- a) **EXPLAIN** the different distribution patterns for low and high income households in the Perth metropolitan area. [8 marks]
- a) **DISCUSS** THREE major urban problems that result from interactions and processes within a megacity of your choice. [10 marks]
- b) **EVALUATE** the effectiveness of sustainable management and planning practices which have been implemented to address the issues of urban sprawl and traffic congestion in the Perth metropolitan area. [12 marks]

OR

Question 2

Use Sources 3 and 4 to answer part a) of this question.

- a) **EXPLAIN** the different distribution patterns for People aged 5 – 14 and for People aged 60 Years or older in the Perth metropolitan area. [8 marks]
- b) **DISCUSS** the key environmental, economic, social and political factors that impact on decisions about planning and management policies in the Perth metropolitan area. [10 marks]
- c) **EVALUATE** the effectiveness of sustainable management and planning practices which have been implemented to address the issues of urban sprawl and traffic congestion in a *megacity* of your choice. [12 marks]

Part B: Unit 3B - The Geography of Climate Change

Question 3

Use Sources 5 and 6 to answer Part (a) of this question:

- a) **DESCRIBE** the changes in temperature and rainfall that have occurred in Western Australia since 1950 and **EXPLAIN** how these changes may have resulted from changes in global atmospheric circulation and pressure systems.

[8 marks]

- b) With specific reference to Source 8, **EXPLAIN** the relationship between carbon dioxide and temperature over the last 420,000 years and **DISCUSS** TWO factors which may account for the pattern shown.

[10 marks]

- c) Use ONE strategy for reducing the adverse effects of climate change to **EVALUATE** the different viewpoints of stakeholders in EITHER agricultural OR urban/industrial activities towards the strategy.

[12 marks]

OR

Question 4

Use sources 7 and 8 to answer Parts a) and b) of this question:

- a) **DESCRIBE** the pattern of temperature change that has occurred in Australia since 1950 and **EXPLAIN** how these changes may have resulted from changes in global atmospheric circulation and pressure systems.

[8 marks]

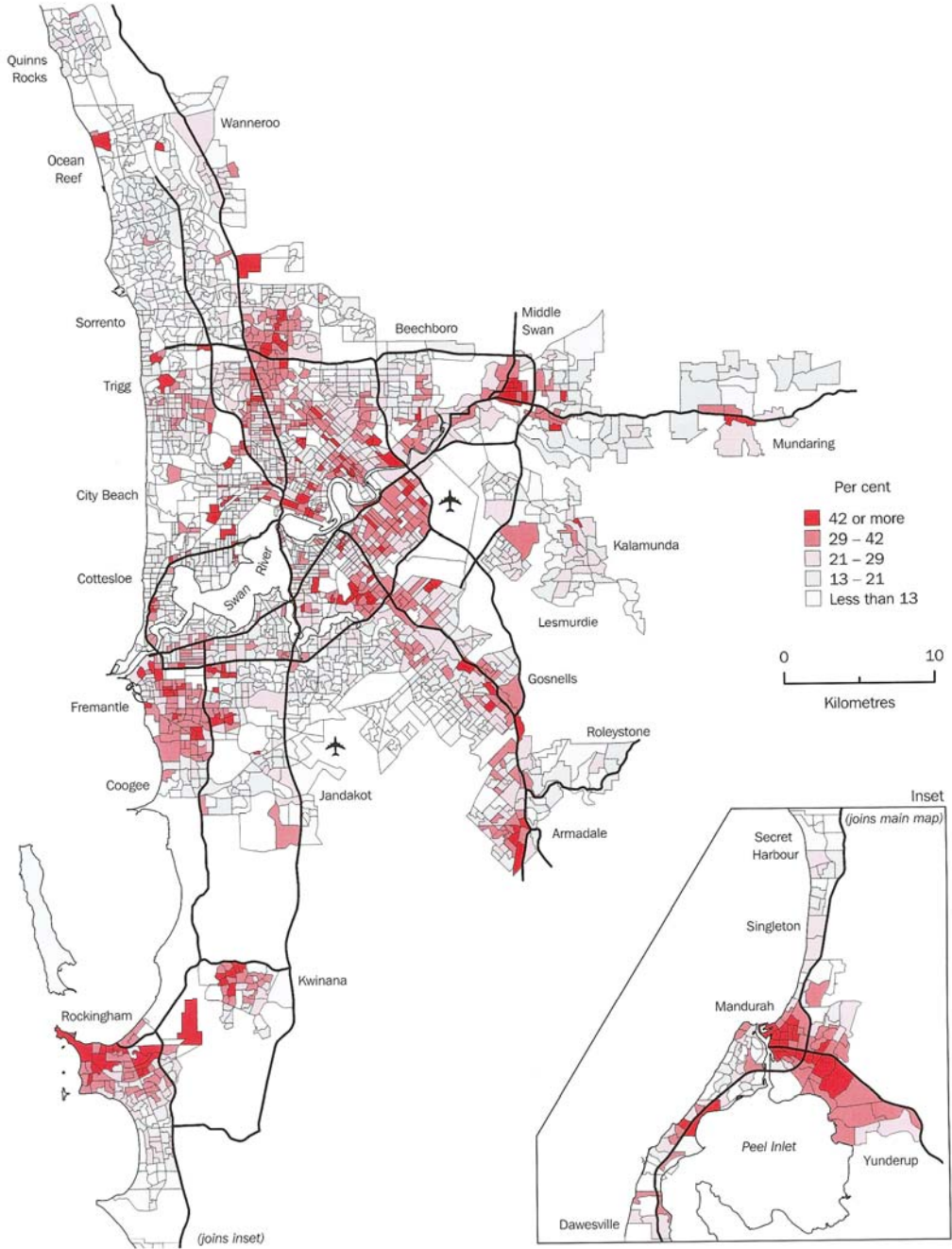
- b) Using actual examples from around the world, **EXAMINE** how climate change may affect patterns of agriculture OR human settlement.

[10 marks]

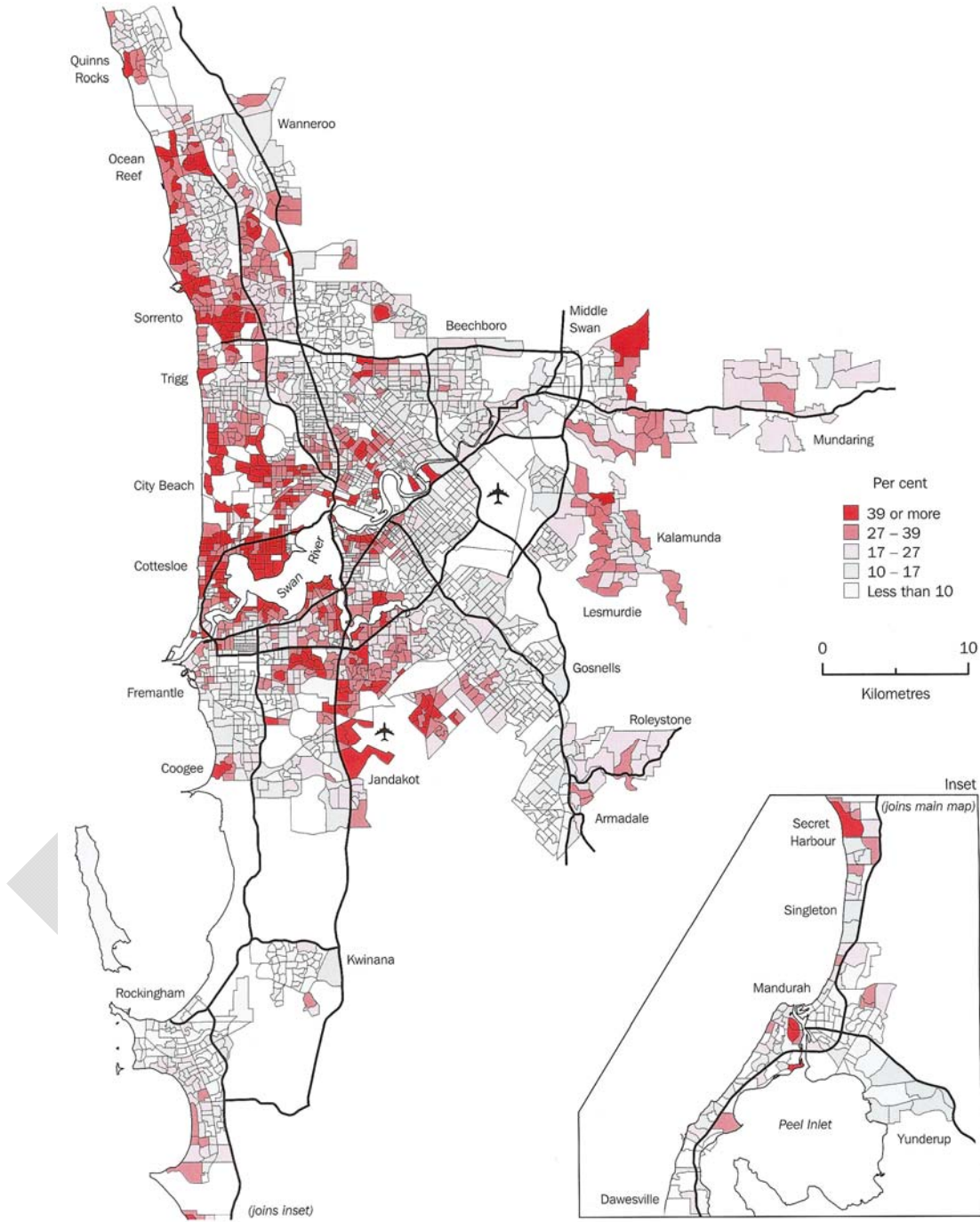
- c) *'Economic and political factors drive decisions that affect sustainability'*. **DISCUSS** this statement in the context of EITHER agriculture OR urban settlement and industry.

[12 marks]

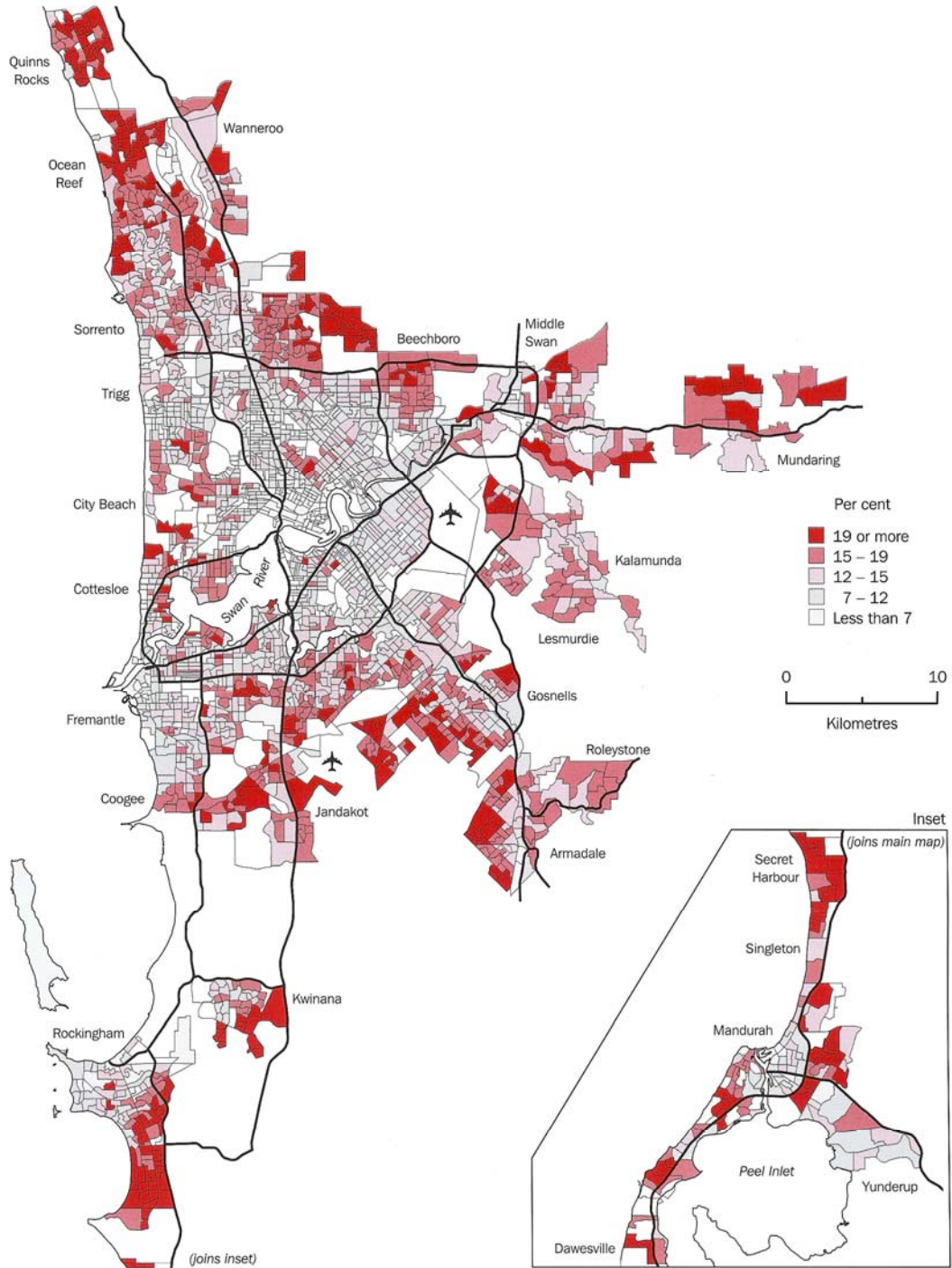
SOURCE 1 – LOW INCOME HOUSEHOLDS (PERTH)



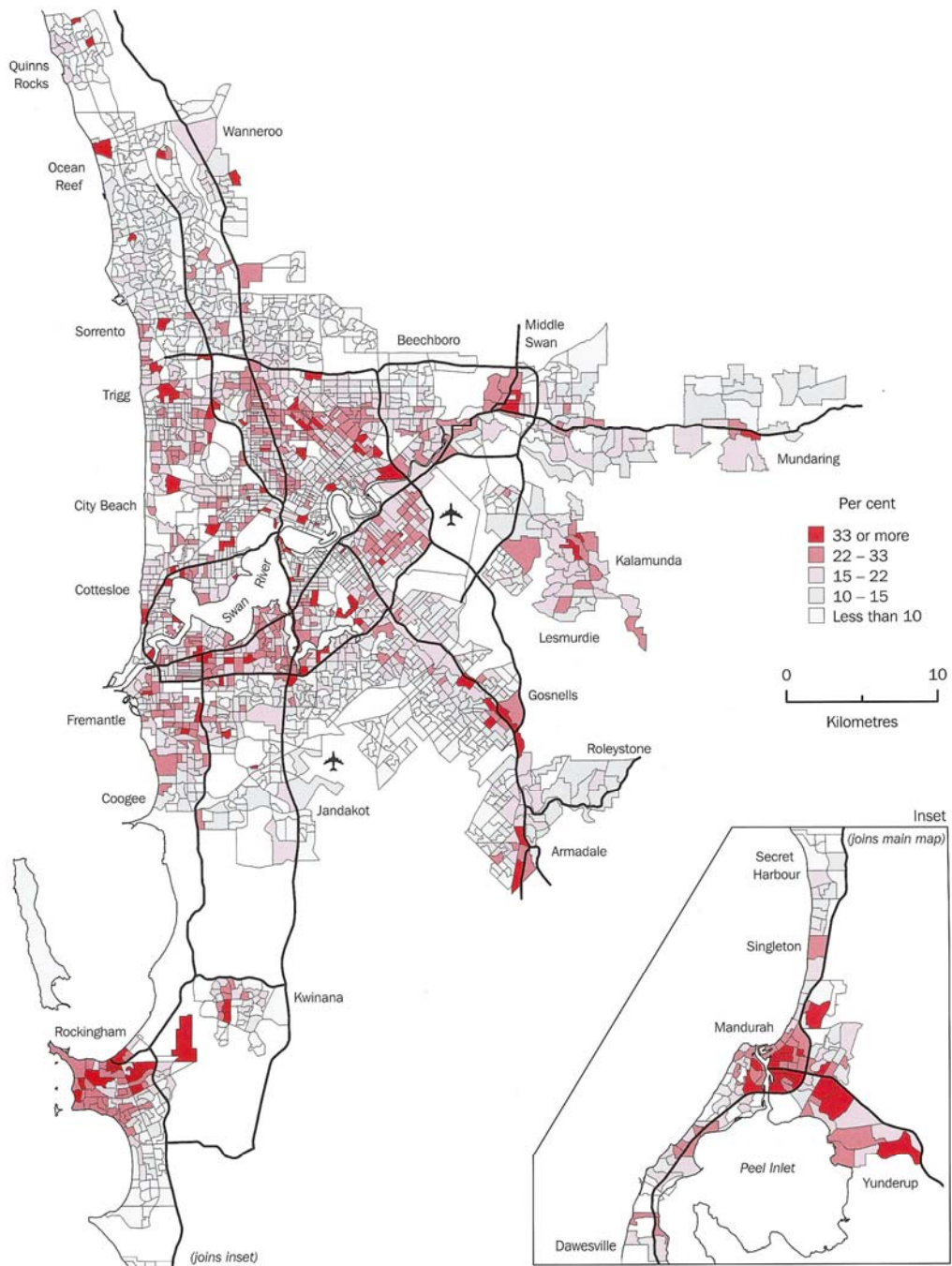
SOURCE 2 – HIGH INCOME HOUSEHOLDS (PERTH)



SOURCE 3 – PEOPLE AGED 5 - 14 (PERTH)

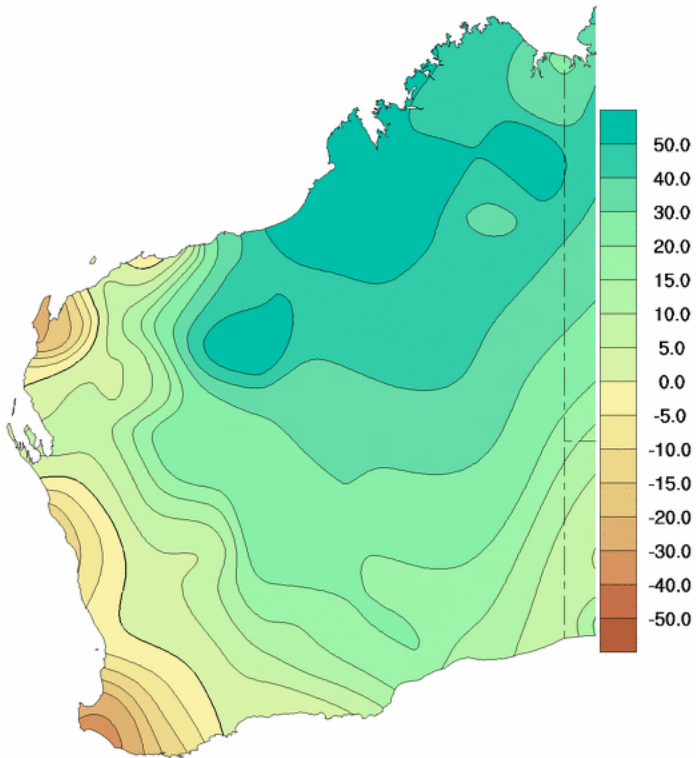


SOURCE 4 – PEOPLE AGED 60 YEARS OR OLDER (PERTH)



SOURCE 5

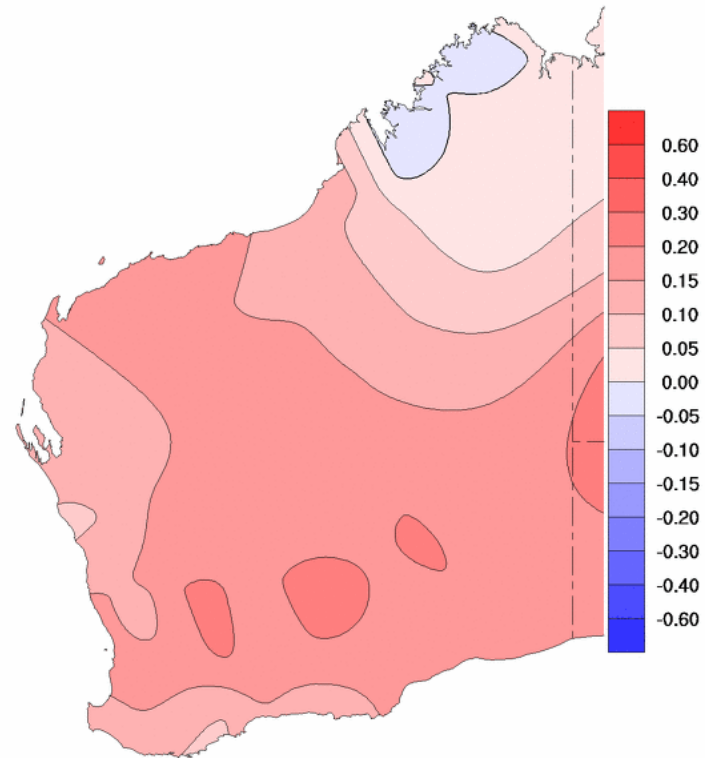
Trend in Annual Total Rainfall 1950-2007 (mm/10yrs)



© Commonwealth of Australia 2008, Australian Bureau of Meteorology

SOURCE 6

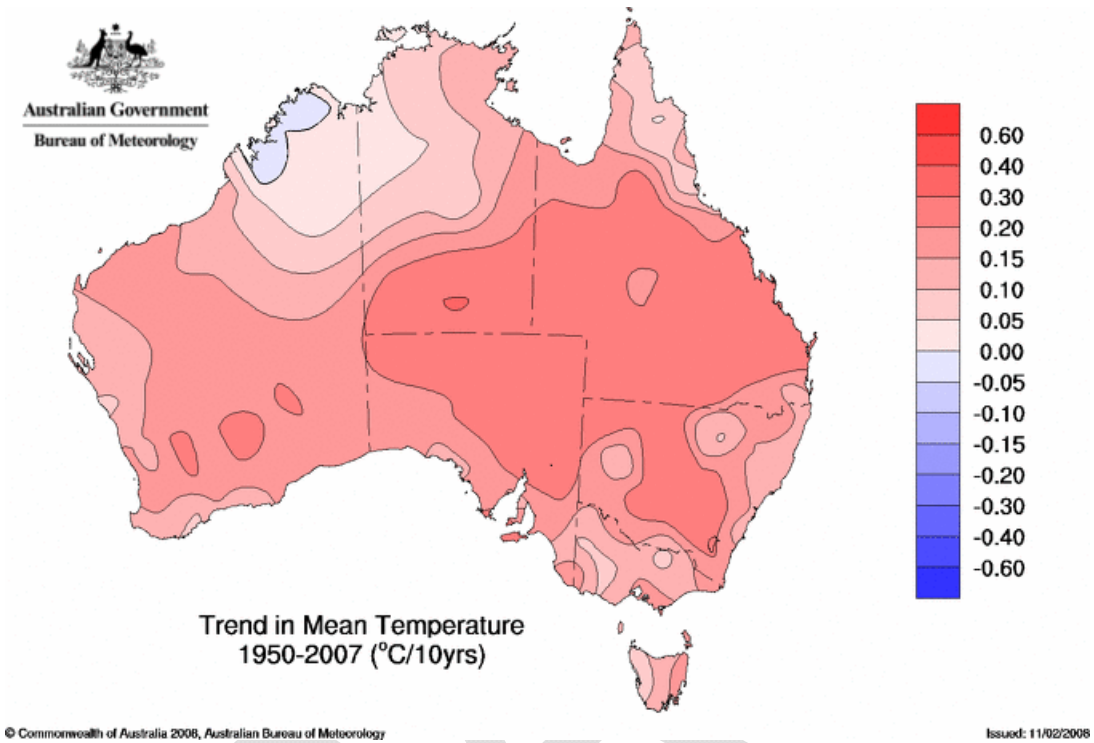
Trend in Mean Temperature 1950-2007 (°C/10yrs)



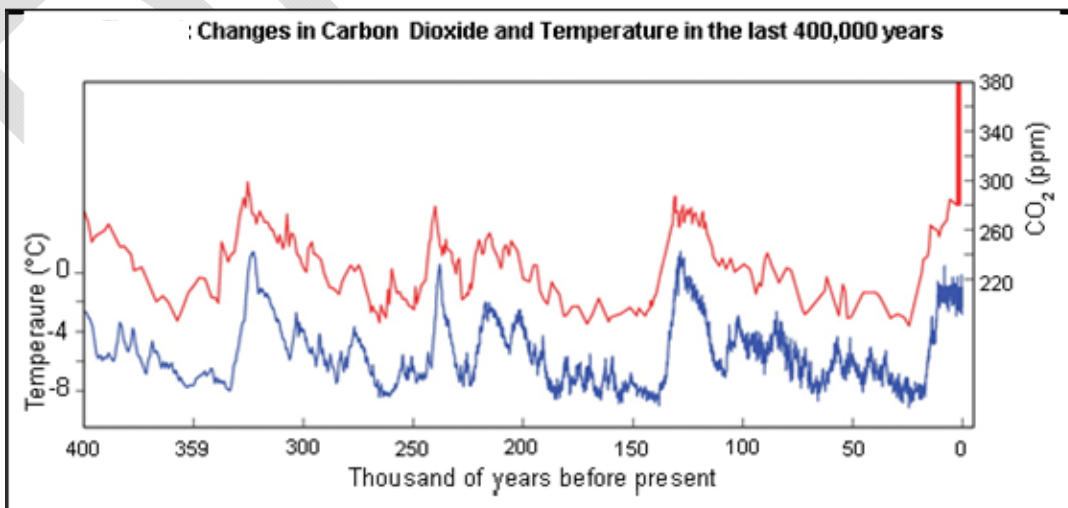
Issued: 11/02/2008 © Commonwealth of Australia 2008, Australian Bureau of Meteorology

Issued: 11/02/2008

SOURCE 7



SOURCE 8



ACKNOWLEDGEMENTS

- Source 1 – Low Income Households (Perth)**
- Source 2 – High Income Households (Perth)**
- Source 3 – People Aged 5 – 14 (Perth)**
- Source 4 – People Aged 60 Years and Over (Perth)**

Australian Bureau of Statistics (2002). 2030.5: Perth: A Social Atlas. Canberra. Commonwealth of Australia, p8, 11, 25 – 26.

- Source 5 – WA's Trend in Annual Total Rainfall 1950 - 2007**
- Source 6 – WA's Trend in Mean Temperature 1950 - 2007**
- Source 7 – Australia's Trend in Mean Temperature 1950 – 2007**

Australia's Trend in Mean Temperature 1950 – 2007. Retrieved April 10, 2008, from http://www.bom.gov.au/cgi-bin/silo/reg/cli_chg/trendmaps.cgi?variable=tmean®ion=aus&season=0112&period=1950

- Source 8 – Changes in Carbon Dioxide and Temperature in the Last 400000 Years**

Changes in Carbon Dioxide and Temperature in the Last 400000 Years. Retrieved April 10, 2008, from <http://www.epa.gov/climatechange/science/images/co2-temp.gif>